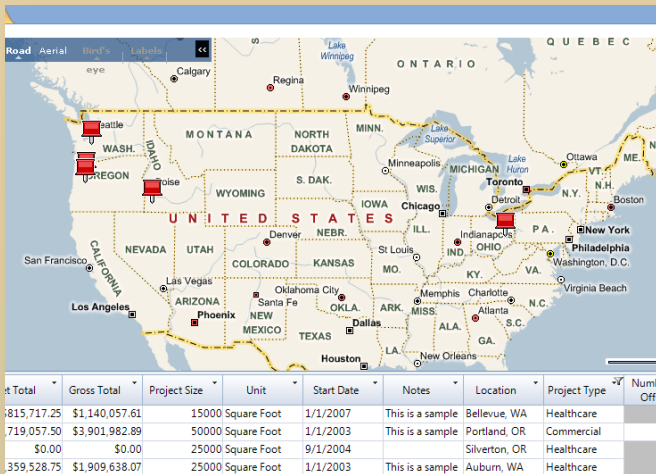
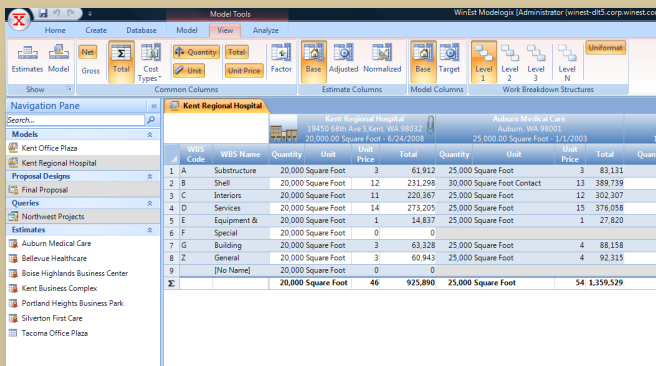


ONE OF THE FIRST SYSTEMS to truly leverage a company's project-cost history, WinEst's **Modelogix** cost-modeling tool ties seamlessly to your data from any leading cost-tracking solution—including MS Excel, WinEst and many others. Your data is stored and managed in a user-defined cost structure and readily accessible, as needed, throughout your company.



Modelogix lets you categorize your estimate in an unlimited number of ways which, combined with optional geographic location, enables an estimate query system that can be as simple or advanced as you like.



After completing the cost model, Modelogix lets you print it directly or save it as a MS Excel® or Adobe Acrobat® PDF document

Modelogix is tightly integrated with WinEst, but is also a stand-alone application. It can work with estimates or data from countless estimating and project-management software systems.

Modelogix allows any and all related project files to be attached to your project-cost data, providing additional project details during the cost modeling process.

Modelogix provides detailed unit-price analysis across all projects in your search results (minimum/maximum unit price, median unit price, unit price variance—even standard deviation).

Additional Modelogix features:

- Microsoft SQL database of:
 - estimated costs authored in WinEst
 - estimated costs authored in other cost-estimating tools
 - as-built costs from project-management solutions
- Supports user-defined “smart categories,” providing an intelligent organizational structure for accurate and timely project-cost data.

