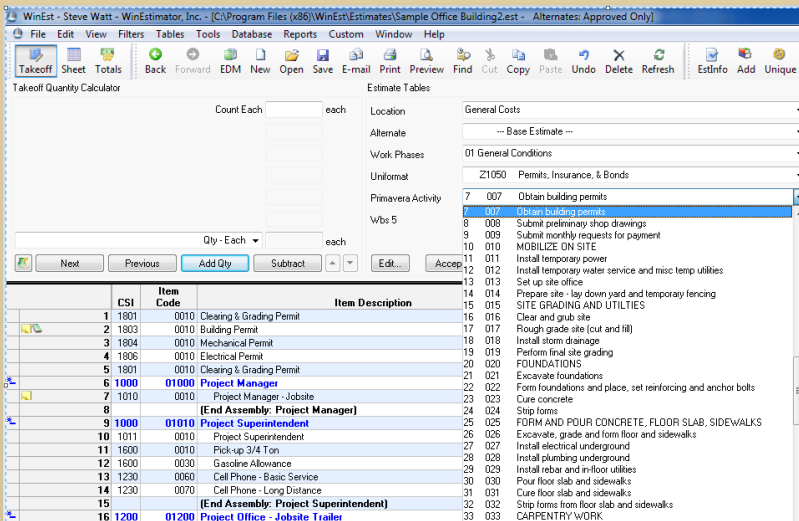
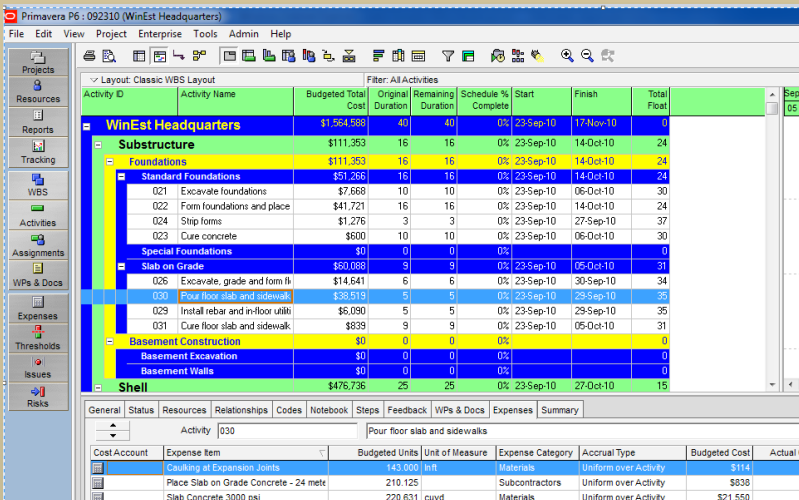


With Wonest's introduction of Primavera Integrator, gone are the days of creating cost and resource-loaded tasks from a "printed" copy of the estimate. WinEst has created a unique two-way interface to Primavera that dramatically reduces the time needed to load each individual activity with supporting details from the estimate. Less time spent creating the cost and resource-loaded activities means more time for exploring "what-if" scenarios, like resource leveling and changing dependencies between tasks.



Primavera activities can be pre-assigned to items in the estimating database, or activities can be assigned to items when you're assembling the estimate.



Activities are created in Primavera with supporting resource data contained right in the estimate.

KEY FEATURES

- ▶ supports an estimating-centric workflow where project activities are created from the scope of work, as defined by the estimate
- ▶ supports a project-controls-centric workflow, where the project scope is initially defined in Primavera, and then made available to the estimator at the time the estimate is being assembled
- ▶ allows activities to be created in Primavera with the same work breakdown (WBS) structure as defined in the WinEst estimate
- ▶ allows groups of individual estimate items to be summarized into a single activity
- ▶ creates activities in Primavera with complete details from the estimate, such as labor trades, labor hours, labor costs, material descriptions, material units, material costs, equipment costs, subcontractor costs and more
- ▶ allows the estimator to view the parallel/serial logic of activities while assembling the estimate

