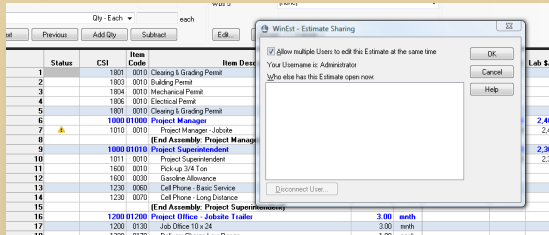
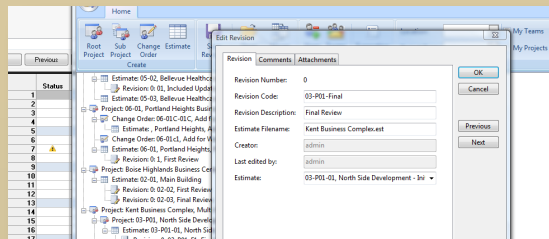


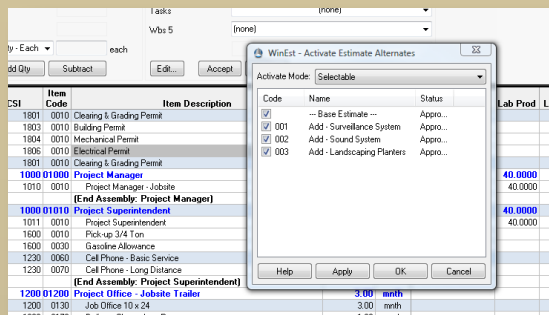
eTEAM IS THE PROFESSIONAL ESTIMATOR'S SOLUTION for efficient and comprehensive teamwork. Designed for companies where collaborative estimating is critical, eTeam lets you produce and share your estimates from anywhere—across the hall or across the globe.



WinEst eTeam allows multiple users in the same estimate at the same time. Administrative controls include the ability to remove users from estimates, take ownership of items, and create new users.



WinEst Pro Plus and WinEst eTeam allow you to easily add options to the base bid. Alternates can selectively be included or excluded from the base estimate.



Enterprise Data Manager organizes and filters estimates by many categories (Location, Teams, Project Type, Change Order, etc). EDM is also used for revision control. (EDM is an Add-On product and included with eTeam)

IT'S THE DEFINITION OF SYNERGY.

Quite simply, eTeam lets you do more with what you have—and more efficiently than ever before. One of WinEst's newest innovations, eTeam is packed with useful features that bring your team together with focus and clear vision—for your sharpest-possible edge.

eTeam lets you more easily record and manage multiple price quotes from subcontractors and material suppliers. Store both list and sale prices for each material item in the database (price book)—a key pricing option for the manufacturing-market segment.

You can also more quickly query your cost database by filtering your estimate by every field on an item record. Utilize new tax markups that support International requirements for "tax-on-tax" calculations. Other new features—such as additional spreadsheet views, reporting options and preference settings—give you the power to customize your system like never before.

- ▶ **Fully customizable toolbar and menus** Your data, the way you want to see it.
- ▶ **Master assemblies** Assemblies/sub-assemblies are now driven by other assemblies.
- ▶ **Database WBS codes** WBS codes can now be stored in the database. Both the standard WBS codes 1-7 and the hierarchical WBS codes 8-14 are supported.
- ▶ **Drag-and-drop in filters** Moving items to a new heading updates the code.
- ▶ **Unique crews** Labor crews have been enhanced to support unique crews. A unique crew is a crew that is specific to one estimate item.
- ▶ **More powerful item database** Assign items with a user-defined, four-level hierarchy, compatible with the 2004 CSI Master Format.
- ▶ **Customized Undo command** Two new Undo commands allow you to undo the last change made on a particular estimate item *as well as on a particular field of an estimate item.*
- ▶ **Scheduling tasks** Project-scheduling task lists are now system-wide instead of estimate-specific.
- ▶ **Expanded Takeoffs** New item & assembly takeoff and Item-search capabilities.
- ▶ **Estimate filtering** New Materials factor allows variable adjustments; customizable filters enhance analysis and reporting.
- ▶ **Totals-page filter editing** Editable filter-based Totals page enables individualized report formatting.
- ▶ **Spreadsheet-style estimating** Easy customization and greater analytical flexibility.
- ▶ **Comprehensive audit trail** Precisely track all changes and modifications with item-level detail.
- ▶ **Multiple-document Interface** Open multiple estimates at a time, and easily drag & drop items between estimates.

