

WINEST RELEASES BIM TOOL DESIGNEST PRO!

One of the earliest recognized benefits of BIM (building information modeling) is in the area of interference checking. We've all been to trade shows and marveled at the incredible 3D project models that provide an almost photographic view of the completed project. Now it's possible to sequence the building objects and model the project in the order that the building is actually going to be constructed.

The adoption of this technology allows the project team to view and resolve interference issues long before the building site has even been cleared. The cost savings associated with resolving these issues upfront versus discovering the problem in the field is indisputable.

EXTENDING BIM WITH THE FOURTH AND FIFTH DIMENSIONS (TIME & COST)

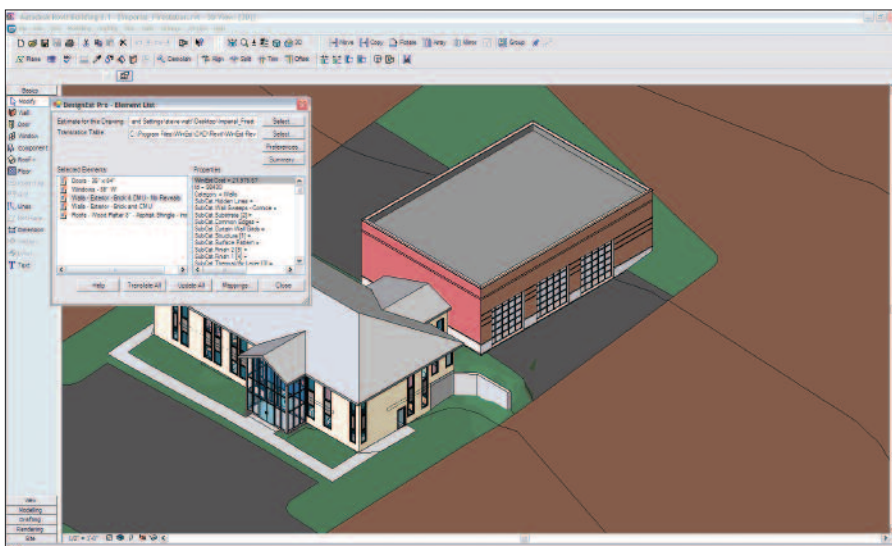
BIM begins with creating designs using building objects and their associated properties. It is now possible to use these objects and properties to expedite the process of building a cost project estimate.

DesignEst Pro from WinEstimator, Inc. allows CAD (computer-aided design) objects and properties in

both Autodesk's Revit building applications to be mapped to the corresponding objects and properties in a WinEst database. The concept allows the user to map their object based CAD system with their object-based estimating system, allowing for a more automated quantity takeoff and cost estimating process.

This one time mapping utility provides the estimating system with the critical property information for each building object, allowing **DesignEst Pro** to combine the design data with business process data resulting in information that directly drives business processes. The end result is a detailed estimate and bill of materials for each object represented in the design. When DesignEst Pro encounters a CAD object not previously mapped to an estimating object, the user can map CAD objects to estimating objects "on the fly."

Steve Watt, president of WinEstimator, Inc., stated, "As the adoption rate of 3D design tools like Autodesk's Revit Architecture 2008 continues to grow, it was a logical next step for us to tap into the content of the 3D model. DesignEst Pro uses that content for the purpose of enhancing the building model with the fourth and fifth dimensions, time and cost."



Ken Tometsko, director of operations, Autodesk AEC Division, stated, "The release of WinEst DesignEst Pro is an important step in the growth of BIM, as it will help architects and designers leverage the data in their Revit model downstream for faster turn-around on estimates and change orders."



For more information on DesignEst Pro visit www.winest.com